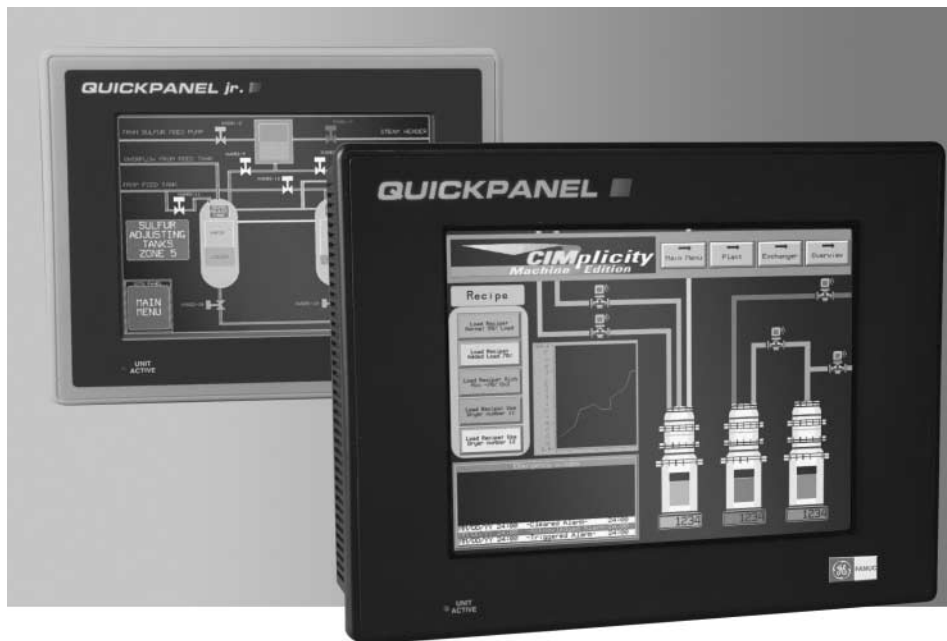




## GE Fanuc Automation

# QuickPanel™ Ordering Guide

- Displays .....1
- Communications ..... 4
- Software .....5
- Accessories ..... 6



### Displays

#### QuickPanel with Ethernet and CompactFlash™ Card Interface

Equipped with a 10 base-T Ethernet port, these next-generation QuickPanels let you connect to your network for quick and easy communication to your PLC and faster application downloads. In addition, you can transfer applications to and from the unit using the on-board CompactFlash interface, making upgrades easier. Each unit is available in a range of display sizes and communicates with all major PLCs and PLC networks<sup>†</sup>, including Allen-Bradley Ethernet IP, GE Fanuc SRTP and EGD, and Modicon Modbus TCP/IP. And with its NEMA 4X/12 rating as well as UL (Class 1, Div. 2), cUL and CE approvals, the QuickPanel is built to meet the demand of hard industrial environments.

Description	Catalog Number	
QuickPanels with Ethernet and CompactFlash*	QPKSGDN0000	6" STN Color LCD, RS232/RS485 serial port for PLC drivers, CompactFlash, 1 Mbyte memory, 24 VDC, UL/cUL, CE
	QPKCGDE0000	6" TFT Color LCD, RS232/RS485 serial port & Ethernet for PLC drivers, CompactFlash, 2 Mbyte memory, 24 VDC, UL/cUL, CE
	QPGCGDE0000	7.4" TFT Color LCD, RS232/RS485 serial port & Ethernet for PLC drivers, CompactFlash, 4 Mbyte memory, 24 VDC, UL/cUL, CE
	QPICGDE0000	10.5" TFT Color LCD, RS232/RS485 serial port & Ethernet for PLC drivers, CompactFlash, 4 Mbyte memory, 24 VDC, UL/cUL, CE
	QPICGAE0000	10.5" TFT Color LCD, RS232/RS485 serial port & Ethernet for PLC drivers, CompactFlash, 4 Mbyte memory, 110 VAC
	QPLCGDE0000	12.1" TFT Color LCD, RS232/RS485 serial port & Ethernet for PLC drivers, CompactFlash, 4 Mbyte memory, 24 VDC, UL/cUL, CE
	QPLCGAE0000	12.1" TFT Color LCD, RS232/RS485 serial port & Ethernet for PLC drivers, CompactFlash, 4 Mbyte memory, 110 VAC

\* Contact factory for a complete list of support PLC drivers & networks.

† Some PLC networks require the use of a communication module adaptor.

UL listed to U.S. and Canadian Safety Standards; for use in Class 1, Division 2, Group A, B, C, D (UL1604)

## QuickPanel

### 9" Monochrome EL, 10.5" Color STN, TFT or Monochrome LCD, 12.1" Color TFT

Like their smaller counterparts, these larger members of the QuickPanel family are practical and cost-effective replacements for a variety of discrete devices, from push buttons and pilot lights to message centers. The 12.1" diagonal display has 800 W x 600 H pixels, the 10.5" diagonal display has 640 W x 480 H pixels and the EL has a 9" diagonal screen with a 640 W x 480 H pixel format. Each provides a bold, clear display. Dynamic graphics can be added to present information-rich pictures to the operator in a single glance. Each unit communicates with all major PLCs and PLC networks including A-B Remote I/O, Data Highway Plus, Modbus Plus and GE Fanuc Genius (some require an optional, field-installed module). All this comes in a slim-line, compact package.



The bold, clear display of the 10.5" Color TFT.

Description	Catalog Number	
QuickPanel	GQPI3D200E2P	9" Monochrome EL, RS232/RS485 serial port for PLC drivers, 2 Mbyte memory, 24 VDC, UL/cUL, CE
Unit Pricing*	GQPI31200E2P	9" Monochrome EL, RS232/RS485 serial port for PLC drivers, 2 Mbyte memory, 110 VAC
	GQPI2D100L2P	10.5" Monochrome LCD, RS232/RS485 serial port for PLC drivers, 1 Mbyte memory, 24 VDC, UL/cUL, CE
	GQPI3D200S2P	10.5" STN Color LCD, RS232/RS485 serial port for PLC drivers, 2 Mbyte memory, 24 VDC, UL/cUL, CE
	GQPI31200S2P	10.5" STN Color LCD, RS232/RS485 serial port for PLC drivers, 2 Mbyte memory, 110 VAC
	QPICGDE0000	10.5" TFT Color LCD, RS232/RS485 serial port & Ethernet for PLC drivers, CompactFlash, 4 Mbyte memory, 24 VDC, UL/cUL, CE
	QPICGAE0000	10.5" TFT Color LCD, RS232/RS485 serial port & Ethernet for PLC drivers, CompactFlash, 4 Mbyte memory, 110 VAC
	GQPI31200C2P	10.5" TFT Color LCD, RS232/RS485 serial port for PLC drivers, 2 Mbyte memory, 110 VAC
	OPLCGDE0000	12.1" TFT Color LCD, RS232/RS485 serial port & Ethernet for PLC drivers, CompactFlash, 4 Mbyte memory, 24 VDC, UL/cUL, CE
	OPLCGAE0000	12.1" TFT Color LCD, RS232/RS485 serial port & Ethernet for PLC drivers, CompactFlash, 4 Mbyte memory, 110 VAC
	GQPL31200C2P	12.1" TFT Color LCD, RS232/RS485 serial port for PLC drivers, 2 Mbyte memory, 110 VAC

\* Contact factory for a complete list of support PLC drivers & networks.  
UL listed to U.S. and Canadian Safety Standards; for use in Class 1, Division 2, Group A, B, C, D (UL1604)

## Video QuickPanel

GE Fanuc now offers another technical innovation in industrial process control... the Video QuickPanel. This member of the QuickPanel family provides three channels of video input. Up to four video display objects can appear on a panel. With this dynamic enhancement, your machine process can now be monitored and controlled directly by the machine operator. The QuickPanel Video combines a 10.5", 640 W x 480 H color TFT flat panel display with a resistive touch panel into a compact package. The unit is compatible with QuickDesigner software. All inputs are software selectable and programmed just like any other QuickPanel operator.



Description	Catalog Number	
QuickPanel Video	GQPI211V0C2P	10.5" TFT Color for standard serial PLC drivers, 120 VAC with 3 NTSC video inputs
Unit Pricing	GQSI211V0C2P	Quick Start Kit. QPI-211VO-C2P, Quick Designer for Windows™ off-line editor, user manual, download cable, HMI-CAB-C53, HMI-CAB-C82, HMI-CAB-C83

## QuickPanel, jr.

The QuickPanel, jr. is a practical and cost-effective replacement for a variety of discrete devices, from push buttons and pilot lights to message centers. Despite its small size, the QuickPanel, jr.'s 5" or 6" diagonal screen with 320 W x 240 H pixel format provides a sharp display in color or monochrome. Each unit communicates with all major PLCs and PLC networks including A-B Remote I/O, Data Highway Plus, Modicon Modbus Plus and GE Fanuc Genius® (some require an optional, field-installed module). The industrially designed QuickPanel, jr. is rated NEMA 4X/12. Best of all, its simple yet versatile design will increase your productivity at a lower installed cost.



The amazingly versatile and compact QuickPanel, jr.

Description	Catalog Number	
QuickPanel Jr.	GQPJ2D100L2P	5" Monochrome LCD, RS232/RS485 serial port for PLC drivers, 256 Kbyte memory, 24 VDC, UL/cUL
Unit Pricing*	GQPJ2D101L2P	5" Monochrome LCD, RS232/RS485 serial port for PLC drivers, 256 Kbyte memory, 24 VDC, CE
	GQPJ2D100S2P	5" STN Color LCD, RS232/RS485 serial port for PLC drivers, 256 Kbyte memory, 24 VDC, UL/cUL
	GQPJ2D101S2P	5" STN Color LCD, RS232/RS485 serial port for PLC drivers, 256 Kbyte memory, 24 VDC, CE
	GQPK3D200L2P	6" Monochrome LCD, RS232/RS485 serial port for PLC drivers, 1 Mbyte memory, 24 VDC, UL/cUL, CE
	OPKSGDN0000	6" STN Color LCD, RS232/RS485 serial port for PLC drivers, CompactFlash, 1 Mbyte memory, 24 VDC, UL/cUL, CE
	GQPK3D200C2P	6" TFT Color LCD, RS232/RS485 serial port for PLC drivers, 2 Mbyte memory, 24 VDC, UL/cUL, CE
	OPKCGDE0000	6" TFT Color LCD, RS232/RS485 serial port & Ethernet for PLC drivers, CompactFlash, 2 Mbyte memory, 24 VDC, UL/cUL, CE

\* Contact factory for a complete list of support PLC drivers & networks.  
UL listed to U.S. and Canadian Safety Standards; for use in Class 1, Division 2, Group A, B, C, D (UL1604)

## QuickPanel Mini

The QuickPanel Mini is our low-end member of the QuickPanel family. Its limited functionality provides the best solution for those simple control applications. The QuickPanel Mini bridges the gap between the traditional character-based message displays and the traditional graphic operator interface. The QuickPanel Mini gives you low-end graphics interface capabilities within a message display price range.



Description	Catalog Number	
QuickPanel Mini Unit Price*	GQPM3D200B2P	6" Blue Monochrome LCD, RS232/RS485 serial port for PLC drivers, 1 Mbyte memory, 24 VDC, UL/cUL, CE

\* Contact factory for a complete list of support PLC drivers & networks.  
UL listed to U.S. and Canadian Safety Standards; for ordinary use (UL 1950)

## Handy QuickPanel

The Handy QuickPanel is a light weight, hand-held, portable operator interface which supports all standard serial PLC drivers. It does not support any QPJ or QPI communication modules. In addition to touchscreen functionality, there are 11 function keys, a hard-wired push button with external contacts, an external buzzer output, and an operator switch with an additional keypad. Panel development is done with QuickDesigner software.



Description	Catalog Number	
Handy QuickPanel Unit Pricing	GOPH2D100L2P	6" Monochrome LCD w/touchscreen, Function keys, E-stop For standard serial PLC drivers, no comm modules, 24 VDC UL CE
	GOPH2D100S2P	6" Color STN LCD w/touchscreen, Function keys, E-Stop For Standard serial PLC drivers, no comm modules, 24 VDC UL CE
	HMICAB-A02	Cable, 12'. (24 VDC, RS232C and RS422, E-stop, buzzer)
	HMI-CAB-A02-25X	Cable, 25'. (24 VDC, RS232C and RSS422, E-stop, buzzer)
	HMI-CAB-A02-50X	Cable, 50'. (24 VDC, RS232C and RS422, E-stop, buzzer)
	HMI-JBX201	Junction box. Power, PLC & signal connections
	GOBH2D100L2P	Quick Bundle. Includes 6" Monochrome LCD, 12' A02 cable, power supply, junction box. UL CE
	GOBH2D100S2P	Quick Bundle. Includes 6" Color STN LCD, 12' A02 cable, power supply, junction box. UL CE

# Communications

## PLC Communication Cables

PLC Manufacturer	PLC Type	Catalog Number	Description
Allen-Bradley	SLC 500, SLC 5/01, SLC 5/02, SLC 5/03	HMI-CAB-C83	DH-485 program port, one SLC to one QUICKPANEL, no simultaneous program port
		HMI-CAB-C84	DH-485 program port, one SLC to one QUICKPANEL, with simultaneous program port, 6' max.
	SLC 5/03, SLC 5/04	HMI-CAB-C84	DH-485 link via 1747-AIC module, multiple QUICKPANELS to multiple SLC's, 6' max.
		HMI-CAB-C52	Channel 0, 9 pin RS-232
	PLC-5	HMI-CAB-C53	Channel 0, 25 pin RS-232
		HMI-CAB-C107	Channel 0, 25 pin RS-422
		HMI-CAB-C51	KF2 module, 25 pin RS-232
	PLC-2	HMI-CAB-C90	Program Port, 15 pin RS-422
	MicroLogix	HMI-CAB-C106	Program Port, 8 pin circular DIN RS-232
	Remote I/O		Use QPJ- or QPI-ABR-201 Module
Data Highway Plus		Use QPJ- or QPI- ABD-201 Module	
Aromat	FPI (MEWNET)	HMI-CAB-C111	25 pin to 9 pin RS-232
ASCII Single Drop	Customer micro controller or computer		Requires custom cable. Some applications can use C52 or C53
B&R	Mininet	HMI-CAB-C98	2-plated wires RS-422
CANopen	CANopen		Use QPJ- or QPI-COS-201 Module
DeviceNet	DeviceNet		Use QPJ- or QPI-DVN-202 Module
Flex	Customer micro controller, computer, motion controller, scale, etc.		Requires custom cable. Some applications can use C52 or C53
GE Fanuc	SNP 90/30, 90/70	HMI-CAB-C82	Program Port, 15 Pin RS-422
	CMM Module SNP	HMI-CAB-C53	25 pin RS-232
		HMI-CAB-C93	25 pin RS-422
	GE GENIUS 90/30, 90/70, SERIES 6, SERIES 5		Use QPJ- or QPI-GEG-201 Module
	GE Series 6 CCM	HMI-CAB-118	
	VersaMax CPU 001/002/005	HMI-CAB-C111	9 pin RS-232
	VersaMax Micro/Nano	HMI-CAB-C119	RJ45 RS-232
90/30 CPU 351/352/363	HMI-CAB-C120	RJ11 RS-232	
Hitachi	H Series	HMI-CAB-115	15 pin male
	S10	HMI-CAB-C53	4 wire RS-422
IDEC	Micro-1, FA via link adapter	HMI-CAB-C109	25 pin RS-232
	Micro 3		8 pin circular DIN RS-232
Interbus-S	Interbus-S	HMI-CAB-C53	Use QPJ- or QPI-IBS 201 Module
Keyence	KV-L2 Port 1	HMI-CAB-C112	25 pin RS-232
	KV-L2, KV-10R Program Port	NA	RJ11 Handset Connector RS232
Koyo	NA	HMI-CAB-C88	see PLC Direct
Mitsubishi	Series A1S	HMI-CAB-C53	9 pin RS-232, for A1SJ71C24-R2
	Series A Computer Interface	HMI-CAB-C91	25 pin RS-232
	Series A Program Port	HMI-CAB-C91	25 pin RS-422
	FX	HMI-CAB-C91	25 pin RS-422
	FXO	HMI-CAB-C91	25 pin RS-422 via an adapter
Modicon	984 A,B,X	HMI-CAB-C53	25 pin RS-232
	984 Slot and compact	HMI-CAB-C58	9 pin RS-232
	984 micro	HMI-CAB-C102	RJ45 headset connector RS-232
	MODBUS Plus		Use QPJ- or QPI-MBP-201 Module
	MODBUS Slave	HMI-CAB-C53	Requires custom cable. Some applications can use C52 or C53
Omron	C200H	HMI-CAB-C108	25 pin RS-232
	C20H, CQM1	HMI-CAB-C67	9 pin RS-422
		HMI-CAB-C53	9pin RS-232
PLC Direct	DL430, 440 P2, D4-DCM		25 pin RS-232
	DL330, 330P with use of D3-232-DCU, DL350 P2, DL450 PA	HMI-CAB-C53	25 pin RS-232
	DL340	HMI-CAB-C103	4-pin Modular Phone RS-232
	DL240 P2, 250 P1, 350 P1	HMI-CAB-C86	6-pin Modular Phone RS-232
Profibus	Profibus		Use QPJ- or QPI-PBS-201 Module
Reliance	Automate program port, R-net gateway	HMI-CAB-C53	25 pin RS-232
SATTCON	05-35	HMI-CAB-C89	25 pin RS-232
Siemens	S5 family program port	HMI-CAB-C76	15 pin current loop
	3964R 928B, TTY Sub Module	HMI-CAB-C104	25 pin Male Current Loop
	3964R 928B RS232 Sub Module	HMI-CAB-C53	25 pin RS-232
	S7-200 PPI	HMI-CAB-C110	9 pin RS-422
	S7-300 MPI	HMI-CAB-C52	9 pin to PC adapter
Simatic TI	305 with use a RS-232 DCU	HMI-CAB-C53	25 pin RS-232
	405	HMI-CAB-C53	25 pin RS-232
	500 series, 25 pin program port	HMI-CAB-C53	25 pin RS-232
	500 series 9 pin program port	HMI-CAB-C101	9 pin RS-232
	500 series 9 pin male RS-422	HMI-CAB-C92	9 pin RS-422
	TI545-T102, 9 pin female RS-422	HMI-CAB-C100	9 pin RS-422
Square D	Symax model 100 and greater	HMI-CAB-C94	9 pin RS-422
	Symax model 50 via link adapter	HMI-CAB-C53	25 pin RS-232
Toshiba	MX, EX	HMI-CAB-C96	4 plated wires RS-422
	T2	HMI-CAB-C97	15 pin RS-422
Toyopuc	PC1	HMI-CAB-C113	3 plated wires RS-422
	PC2F	HMI-CAB-C114	4 spade lugs RS-422
Uni-Telway	Uni-Telway Network	HMI-CAB-116	25 pin to 8 pin male Mini-DIN



## Communication Modules

Description	Catalog Number	
QuickPanel, Jr. Communication Modules (for all QP.J and QPK units)	QPJ-ABD-201	A-B Data Highway Plus interface module UL CE6" Color STN LCD w/touchscreen, Function keys, E-Stop For Standard serial PLC drivers, no comm modules, 24 VDC, UL CE
	QPJ-ABR-201	A-B 1771 Remote I/O interface module, UL CE
	QPJ-GEG-201	General Electric Genius I/O interface module, UL
	QPJ-MBP-201	Modicon Modbus Plus interface module, UL
	QPJ-PBS-201	Profibus interface module
	QPJ-IBS-201	Interbus-S interface module
	QPJ-COS-201	CANopen interface module
	QPJ-DVN-202	DeviceNet interface module
	QPJ-PSM-201	Communication Module Interface Adaptor, 6" & 7.5" QuickPanels with CompactFlash
QuickPanel Communication Modules (for all QPI & QPL units)	QPI-ABD-201	A-B Data Highway Plus interface module, UL CE
	QPI-ABR-201	A-B 1771 Remote I/O interface module, UL CE
	QPI-GEG-201	General Electric Genius I/O interface module, UL
	QPI-MBP-201	Modicon Modbus Plus interface module, UL
	QPI-PBS-201	Profibus interface module
	QPI-PBS-202	Profibus interface module (with Memory Retention) CE Mark
	QPI-IBS-201	Interbus-S interface module
	QPI-COS-201	CANopen interface module
	QPI-DVN-202	DeviceNet interface module
QPI-PSL-201	Communication Module Interface Adaptor, 10.5" & 12.1" QuickPanels with CompactFlash	

## Software

### CIMPLICITY® Machine Edition Software

From the QuickPanel Mini up to the most advanced QuickPanel, award-winning CIMPLICITY Machine Edition is your first choice for programming software. Easy to use and scalable to processes of all sizes, Machine Edition for QuickPanel gives developers an intuitive, drag-and-drop environment that helps them create applications in record time. Machine Edition also offers the added benefit of an integrated development environment, allowing your QuickPanel to fit seamlessly into the rest of your operation. With a powerful range of graphical, alarming, trending, data analysis, and scripting tools, your plant will be well on the way to higher efficiency and increased productivity.

Description	Catalog Number	
CIMPLICITY Machine Edition Software	BC646MQP001	CIMPLICITY Machine Edition for QuickPanel, with one year of SAFE (Includes QuickPanel download cable.)

### QuickDesigner Software

QuickDesigner, an easy-to-use Windows®-based graphic editor, is common to all QuickPanel models and offers a comprehensive set of panel operators such as pushbuttons and pilot lights as well as text, numeric and graphical data displays.

Description	Catalog Number	
QuickDesigner Software	ODA-EDT-001	QuickDesigner (Advanced software has everything for development and downloading of applications including a download cable.)
	ODA-EDT-001/L	QuickDesigner Lite (Advanced software for development and downloading applications)
	ODA-EDT-05P	QuickDesigner Lite (5 Pack License)

## Accessories

### Keypads

The keypad option adds external keypads that surround the touch screen. The keypads are used in place of, or along with, the touch screen. For example, instead of touching the QuickPanel screen to activate a push button, you can press an external keypad. You can also assign an external keypad to simulate a push button, selector switch, goto panel button, numeric data entry, print screen button or word button.

Description	Catalog Number	
Keypad Unit Pricing	HMI-KPN-201	Numeric and Function Keypad (for OPJ and QPK only)
	HMI-KPN-301	Numeric and Function Keypad (for 9" Display)
	HMI-KPN-302	Numeric and Function Keypad (for 10.5" Display)
	HMI-KPN-401	Numeric and Function Keypad (for 7.4" Display QPGCxxx0000)
	HMI-KPN-402	Numeric and Function Keypad (for 10.5" Display QPICxxx0000)

### Additional Accessories

Description	Catalog Number	
Miscellaneous	HMI-AGO-201	Anti-Glare Overlay for 9" display (5 per pack)
	HMI-AGO-202	Anti-Glare Overlay for 10.5" display (5 per pack)
	HMI-AGO-203	Anti-Glare Overlay for 5" display (5 per pack)
	HMI-AGO-204	Anti-Glare Overlay for 6" display (5 per pack)
	HMI-BEZ-201	Stainless Steel NEMA 4X Bezel for 5" Color or Mono OPJ-2xxxx-xxx
	HMI-BEZ-202	Stainless Steel NEMA 4X Bezel for 9" EL QPI-2xxxx-Exx
	HMI-BEZ-203	Stainless Steel NEMA 4X Bezel for 10.5" Color STN QPI-2xxxx-Sxx, TFT QPI-2xxxx-Cxx, or QPI-2xxxx-Lxx
	HMI-BEZ-204	Stainless Steel NEMA 4X Bezel for 6" Color or Mono QPK-2xxxx-xxx
	HMI-BEZ-205	Stainless Steel NEMA 4X Bezel for 12.1" Color QPL-2xxxx-xxx
	HMI-BEZ-403	Stainless Steel NEMA 4X Bezel for 10.5" QPICxxx0000
	HMI-BEZ-405	Stainless Steel NEMA 4X Bezel for 12.1" QPLCxxx0000
	HMI-BEZ-406	Stainless Steel NEMA 4X Bezel for 7.4" QPGCxxx0000
	HMI-COV-201	Front sheet cover for 9" EL QPI-2xxxx-Exx (10 per pack)
	HMI-COV-202	Front sheet cover for 10.5" Color STN QPI-2xxxx-Sxx, TFT QPI-2xxxx-Cxx or LCD QPI-2xxxx-Lxx (10 per pack)
	HMI-COV-203	Front sheet cover for 5" Color or Mono OPJ-2xxxx-xxx (20 per pack)
	HMI-COV-204	Front sheet cover for 6" Color or Mono QPK-2xxxx-xxx (20 per pack)
	HMI-COV-205	Front sheet cover (hard) for 12.1" Color QPL-2xxxx-xxx (5 per pack)
	HMI-CCT-201	Replacement Cold Cathode Backlight Tube for 10.5 Color STN QPI-2xxxx-Sxx or TFT-QPI-2xxxx-Cxx
	HMI-CCT-202	Replacement Cold Cathode Backlight Tube for 5" Color or Mono QPJ-2xxxx-xxx
	HMI-CCT-203	Replacement Cold Cathode Backlight Tube for 6" Color or Mono QPK-2xxxx-xxx
	HMI-CCT-205	Replacement Cold Cathode Backlight Tube for 12.1" Color QPL-2xxxx-C2P
	HMI-CAB-C49	IBM AT 9 pin F RS232 cable for downloading to QuickPanel and QuickPanel Jr. (10')
	HMI-CAB-C99	Printer cable, QuickPanel printer port, 14-pin Male to 36-pin Male Centronics
	HMI-CAB-C102	Printer cable, QuickPanel printer port for QP4
	HMI-CAB-C105	Printer cable, QuickPanel tool port to 9 pin female connector, RS-232, 10ft.
	HMI-CAB-ETH	Ethernet Crossover Cable
	HMI-ADP-001	Adapter plate allows cutout for QPI 10.5" unit to be used with 9" EL QPI-2xxxx-Exx
	510-1000-004	24 VDC, 1.3 Amp power supply, enclosed design for desktop or panel mounting, with on/off switch (for 5" or 6" Color or Mono QPJ-2xxxx-xxx or QPK-2xxxx-xxx)
	510-1000-041	24 VDC, 2 Amp power supply, enclosed design for desktop with on/off switch for QPI-xDxxx-xxx units



## GE Fanuc Automation

GE Fanuc Automation Information Centers

USA and the Americas 1-800-GE FANUC or (434) 978-5100

Europe and Middle East (352) 727979-1

Asia Pacific 86-21-3222-4555

© 2003 GE Fanuc Automation Americas, Inc. QuickPanel is a trademark and Genius and CIMPLICITY are registered trademarks of GE Fanuc Automation Americas, Inc. Windows is a registered trademark of Microsoft Corporation. All other trademarks are property of their respective owners.

### Additional Resources

For detailed technical specifications and product ordering information, please visit the GE Fanuc website at:

[www.gefanuc.com](http://www.gefanuc.com)