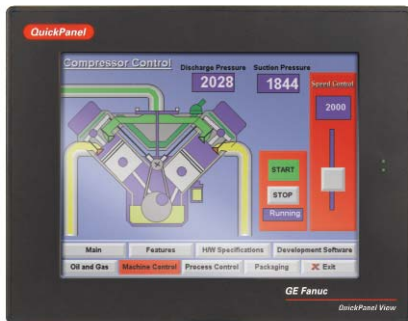




## QuickPanel\* View

Available in a variety of display sizes, the QuickPanel View bundled visualization solution provides the tools required for today's application needs. By integrating the best-selling QuickPanel family of touch screens with award-winning Proficy<sup>®</sup> Machine Edition software, QuickPanel View delivers flexible, scalable performance on a rugged hardware platform. The intuitive environment of Proficy View – Machine Edition software helps reduce application development time, and connectivity is made easy with a family of serial, Ethernet and Fieldbus interfaces.



### The QuickPanel View Advantage

The QuickPanel View family is a robust, integrated hardware and software solution.

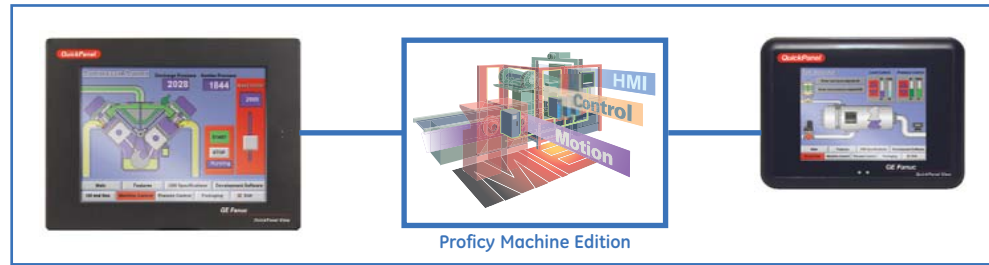
Advantages include:

- Broad range of display sizes from 6" to 15"
- Choice of Monochrome, Color-STN, or Color-TFT display
- Microsoft Windows<sup>®</sup> CE operating system
- Expandable memory & Fieldbus card<sup>†</sup>
- CompactFlash<sup>†</sup>
- UL Class 1 Div 2 (A, B, C, D), ATEX Class 1, Zone 2, CE Mark
- Cost-effective replacement for panel operators
- Functions from data collection and trending to system security and alarming
- Built-in web server for access to data, and panels using any standard browser<sup>†</sup>

- Communication over serial, Ethernet, and communication expansion cards<sup>†</sup>
- Multi-language support selectable by the operator when the system is online
- Shared tags for increased productivity – applications developed for QuickPanel View can share tags with other Proficy Machine Edition applications, eliminating the need to enter the data more than once
- Migration of applications developed with QuickDesigner
- Extensive library of pre-configured animation objects

<sup>†</sup>Available on select models. See pages 2-3 for availability.

Meeting your application needs with a combination of bright touch screen displays, multiple communication options, and Proficy View – Machine Edition software.



	IC754VSB06MTD	IC754VSI06MTD	IC754VSI06STD	IC754VSI12MTD	IC754VSI12CTD	IC754VSL06MTD	IC754VSL06CTD	IC754VSL12CTD	IC754VSF15CTD	
Display:										
Type	6" Mono	6" Mono	6" Color-STN	12" Mono	12" Color-TFT	6" Mono	6" Color-TFT	12" Color-TFT	15" Color-TFT	
Resolution	320 x 240 pixels	320 x 240 pixels		800 x 600 pixels	800 x 600 pixels	320 x 240 pixels		800 x 600 pixels	1024 x 768 pixels	
Size	5.7" (Diagonal)	5.7" (Diagonal)		12.1" (Diagonal)	12.1" (Diagonal)	5.7" (Diagonal)		12.1" (Diagonal)	15.1" (Diagonal)	
Memory:										
DRAM	16 MB		32 MB				32 MB		64 MB	
Expandable	No		To 64 MB or 96MB				To 64 MB or 96MB		To 96 MB or 128 MB	
Communications										
Serial: Com #1	RS232/RS485		RS232/RS485				RS232/RS485			
Serial: Com #2	None		None				RS232			
Ethernet: LAN #1	Download Only		10/100 Mbps				10/100 Mbps			
Ethernet: LAN #2	None		None			None	10 Mbps	10/100 Mbps		
Comm. Expansion	None		GE Fanuc Genius, DeviceNet Slave & PROFIBUS Slave				GE Fanuc Genius, DeviceNet Slave & PROFIBUS Slave			
Compact Flash	None		One, Type 2				One, Type 2			
Environmental										
Operating Temperature	-10 to 60°C (14 to 140°F)	-10 to 60°C (14 to 140°F)	0 to 60°C (32 to 140°F)	0 to 50°C (32 to 122°F)		-10 to 60°C (14 to 140°F)	0 to 60°C (32 to 140°F)	0 to 50°C (32 to 122°F)	0 to 50°C (32 to 122°F)	
Storage Temperature	-20 to 70°C (-4 to 158°F)		-20 to 70°C (-4 to 158°F)				-20 to 70°C (-4 to 158°F)		-20 to 60°C (-4 to 140°F)	
Agencies	UL - Class 1 Div 2 (A, B, C, D) ATEX - Class 1 Zone 2 CE Mark		UL - Class 1 Div 2 (A, B, C, D) ATEX - Class 1 Zone 2 CE Mark				UL - Class 1 Div 2 (A, B, C, D) ATEX - Class 1 Zone 2 CE Mark			
Environmental	NEMA 4/12/4x		NEMA 4/12/4x				NEMA 4/12/4x			
Panel Cut-Out (W x H x D)	6.14" x 4.86" x 2.03" 158 mm x 126 mm x 52 mm	6.14" x 4.86" x 2.76" 158 mm x 126 mm x 70 mm		11.88" x 8.96" x 2.37" 302 mm x 228 mm x 60 mm		6.14" x 4.86" x 2.76" 158 mm x 126 mm x 70 mm	11.88" x 8.96" x 2.37" 302 mm x 228 mm x 60 mm	14.93" x 12.03" x 2.78" 379 mm x 305 mm x 71 mm		
Front of Panel & Depth (W x H x D)	8.00" x 6.17" x 0.85" 203 mm x 157 mm x 22 mm	8.00" x 6.17" x 0.85" 203 mm x 157 mm x 22 mm		13.26" x 10.34" x 0.38" 337 mm x 263 mm x 10 mm		8.00" x 6.17" x 0.85" 203 mm x 157 mm x 22 mm	13.26" x 10.34" x 0.38" 337 mm x 263 mm x 10 mm	15.70" x 12.73" x 0.40" 399 mm x 323 mm x 10 mm		
Input Voltage	10.8 to 30.0 VDC	10.8 to 30.0 VDC		12 VDC @ ±20% or 24 VDC @ ±20%		10.8 to 30.0 VDC		12 VDC @ ±20% or 24 VDC @ ±20%		
Power	Less than 24W	Less than 24W		Less than 48W		Less than 24W	Less than 48W	Less than 60W		
Programming Tool		Proficy Machine Edition View for QuickPanel & QuickPanel View Proficy Machine Edition View Standard					Proficy Machine Edition View Standard			
Push Button & Pilot Light	✓	✓	✓	✓	✓	✓	✓	✓	✓	
Data Display & Data Entry	✓	✓	✓	✓	✓	✓	✓	✓	✓	
Alarms	✓	✓	✓	✓	✓	✓	✓	✓	✓	
Graphic Symbols	✓	✓	✓	✓	✓	✓	✓	✓	✓	
Drop-down & List Boxes	✓	✓	✓	✓	✓	✓	✓	✓	✓	
Animation	✓	✓	✓	✓	✓	✓	✓	✓	✓	
Trending	✓	✓	✓	✓	✓	✓	✓	✓	✓	
Scripting	View	View & Visual Basic					View & Visual Basic			
Logging		View Logging to CF or Historian Collector					View Logging to CF or Historian Collector			
Remote Desktop Services						✓	✓	✓	✓	
Web Publishing						✓	✓	✓	✓	
MS Viewers						✓	✓	✓	✓	
USB						✓	✓	✓	✓	

## QuickPanel View Communication Hardware

PLC Manufacturer	PLC Type	Part Number	Description
Allen Bradley	SLC500, 5/01, 5/02, 5/03	HMI-CAB-C83	DH-485 Program Port, 8-pin RJ-45 Male, RS-422, No simultaneous connection to program port
		HMI-CAB-C84	DH-485 Program Port, 8-pin RJ-45 Male, RS-422, with simultaneous connection to program port
	SLC5/03, 5/04, ControlLogix	HMI-CAB-C52	Channel 0, 9-pin Female, RS-232
	PLC-5	HMI-CAB-C51	KF2 Module, 25-pin Female, RS-232
		HMI-CAB-C53	Channel 0, 25-pin Male, RS-232
		HMI-CAB-C55	KE Module, 15-pin Male, RS-232
		HMI-CAB-C107	DF1, 25-pin Male, RS-422
MicroLogix	HMI-CAB-C106	DF1, 8-pin Circular DIN, RS-232	
Automation Direct	DL205 & DL305	HMI-CAB-C86	Programming Port, 6-pin Modular Male, RS-232
	DL305 & DL405	HMI-CAB-C103	Programming Port, 4-pin Modular Male, RS-232
	DL305 & DL405 w/ 25-pin comm. Port	HMI-CAB-C53	Programming Port, 25-pin Male, RS-232
Fieldbus	DeviceNet	IC754DVNS01	DeviceNet Slave Communication Card for Quickpanel View
	PROFIBUS	IC754PBSS01	PROFIBUS Slave Communication Card for QuickPanel View
GE Fanuc	Series 90 CMM Module	HMI-CAB-C53	25-pin Male, RS-232
		HMI-CAB-C93	25-pin Male, RS-422
	Series 90-30 & 90-70	HMI-CAB-C82	Programming Port, 15-pin Male, RS-422
	Series 90-30 CPU351, 352, 363	HMI-CAB-C120	Program Port, 6-pin Male RJ-11, RS-232
	VersaMax CPU001, 002, 005	HMI-CAB-C111	Program Port, 9-pin Male, RS-232
	VersaMax Nano/Micro	HMI-CAB-C119	Program Port, 8-pin Male RJ-45, RS-232
	Genius	IC754GEN001	Genius Communication Card for QuickPanel View & Control
Mitsubishi	Series A	HMI-CAB-C53	25-pin Male, RS-232
		HMI-CAB-C88	9-pin Male, RS-232
	Series FX	HMI-CAB-C91	25-pin Male, RS-422
Modicon	984 A, B, X	HMI-CAB-C53	25-pin Male, RS-232
	984 Slot and Compact	HMI-CAB-C58	9-pin Male, RS-232
	984 Micro	HMI-CAB-C102	Program Port, 8-pin Male RJ-45, RS-232
Omron	C200H	HMI-CAB-C53	25-pin Male, RS-232
		HMI-CAB-C108	9-pin Male, RS-422
	C20H, CQM1	HMI-CAB-C67	9-pin Male, RS-232
Siemens	500 Series	HMI-CAB-C53	Programming Port, 25-pin Male, RS-232
		HMI-CAB-C101	Programming Port, 9-pin Female, RS-232
		HMI-CAB-C92	9-pin Male, RS-422
	TI545-1102	HMI-CAB-C100	Programming Port, 9-pin Female, RS-422
	305 & 405	HMI-CAB-C53	Programming Port, 25-pin Male, RS-232
	S7-200 PPI	HMI-CAB-C110	9-pin Male, RS-422
Square D SY/MAX	SY/MAX Model 100 & greater	HMI-CAB-C94	9-pin Male, RS-422
	SY/MAX Model 50 via link adaptor	HMI-CAB-C53	25-pin Male, RS-232

## Accessories

Part Number	Description
IC754PCMCIA001	PCMCIA Adaptor for QuickPanel View & Control
IC754ACC32MEM	Expansion Memory 32 Mbytes
IC754ACC64MEM	Expansion Memory 64 Mbytes
IC754ACC06GAS	Gasket for 6 Inch QuickPanel View & Control
IC754ACC12GAS	Gasket for 12 Inch QuickPanel View & Control
IC754ACC15GAS	Gasket for 15 Inch QuickPanel View & Control
IC754ACC06MNT	Mounting Clips & Power Connector for 6 Inch QuickPanel View & Control
IC754ACC12MNT	Mounting Clips & Power Connector for 12 Inch QuickPanel View & Control
IC754ACC15MNT	Mounting Clips & Power Connector for 15 Inch QuickPanel View & Control
IC754ACC06BEZ01	Stainless Steel Bezel for 6 Inch Mono & TFT-Color QuickPanel View & Control
IC754ACC06BEZ02	Stainless Steel Bezel for 6 Inch STN-Color QuickPanel View
IC754ACC12BEZ01	Stainless Steel Bezel for 12 Inch TFT-Color QuickPanel View & Control
IC754BEZ06GAS	Replacement Gasket for 6 Inch Stainless Steel Bezel
IC754BEZ12GAS	Replacement Gasket for 12 Inch Stainless Steel Bezel
IC754ACC12ADP	Adaptor Kit for 12 Inch QuickPanel View & Control into CEI/x Cutout

### GE Fanuc Automation Information Centers

Americas:  
1 800 GE FANUC or 434 978 5100

Asia Pacific:  
86 21 3222 4555

Europe, Middle East and Africa:  
800 1 GE FANUC or 800 1 4332682  
or 1 780 401 7717

Europe, Middle East and Africa (CNC):  
352 727979 1

### Additional Resources

For more information, please visit  
the GE Fanuc web site at:

[www.gefanuc.com](http://www.gefanuc.com)

